

TRANSACTION

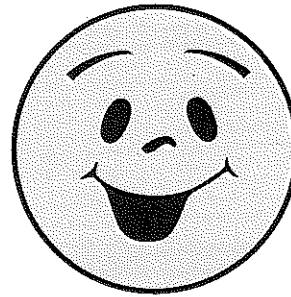
A sustainable future *for* Warwick District

MESSAGE FROM THE CHAIR

I accepted the role as Chair of Action 21 in May 2000 following the resignation of Tessa Kingsley due to maternity leave. Tessa's son William was born safely on 12th July and we look forward to Tessa's gradual re-involvement with us when she has the time.

Action 21 are in the process of applying for a change of status to a not-for-profit company, and possible registration as a charity, as part of a move towards independence from the Council. This will enable us to seek funds from trusts for projects which promote or work towards sustainable development. With a resurgence of interest in Action 21 we plan to hold elections and invite interested people to join the transitional Management Committee making it more representative of the community. We intend to move from a focus on seeking to raise awareness of sustainable development, to more action-based work. The current Mayor of Leamington, Cllr Bill Evans, is an active supporter of and participant in Action 21, and with his support and encouragement, Action 21 hopes to make real progress.

I would welcome feedback from anyone on future directions for our work. Please get in touch with me on RBergerLCA@aol.com or 01926 425466.



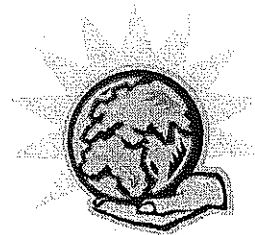
NEW FACES

Action 21 would like to welcome Senior Sustainability Worker, Alan Asbury and Sustainability Worker, Catherine Bower to the group. Starting in May

2000, Alan and Catherine are part of the Community Initiatives Team (CIT) at Warwick District Council. They are here to work with the people, communities and businesses of the District and to support Action 21.

Projects that they are currently working on include community gardening, walking school buses, getting businesses into schools for mentoring and tutoring schemes, promoting healthy eating, and computer recycling.

They are based at Spencer Yard, Leamington Spa and would be happy to discuss their work further with anyone who is interested. See contact details below to find out how you can contact them.

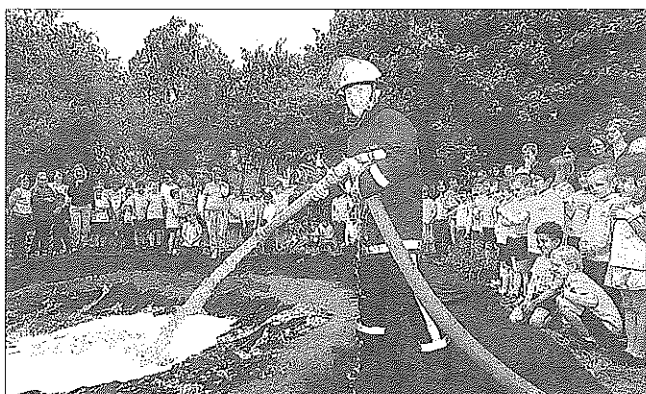


Transaction is the quarterly newsletter of Action 21. Action 21 is the Warwick District Agenda 21 group, working towards a sustainable future for everybody. Transaction is available free from Action 21. Tell us what you are up to. We value your input, so write or e-mail us at Action 21, The Portakabin, Spencer Yard, Leamington Spa, CV31 3SY. Tel. 01926 883258. E-mail. cbower@warwickdc.gov.uk or asbury@warwickdc.gov.uk

WHAT'S HAPPENING IN THE WARWICK DISTRICT?

Pilot Composting Collection Scheme -

WDC is setting up a pilot compost collection scheme in Whitnash. The idea of the scheme is to see how successful it would be to encourage people to recycle the majority of their kitchen waste and not just throw it away in the normal bin. So, **THINK** before you throw your kitchen waste away, is it **VEGETABLE/FRUIT SCRAPS, EGG SHELLS, CARDBOARD?** If it is **COMPOSTABLE DO NOT** throw it away.

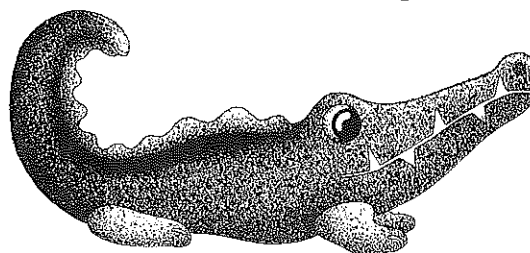


courtesy of Courier Newspaper

Green Fingered?? Even if you are not then why not give gardening a go? There are two projects taking place in Lillington and Sydenham which are working with the community to establish and a wildlife garden, complete with filled pond courtesy of the Fire Brigade, in Sydenham and smaller gardens to improve the area in Lillington. Anyone is welcome to join and get their hands dirty. Please ring Juliette on 318193 if you are in Lillington or Jane on 318163 if you are in Sydenham. If you don't live in one of these areas and feel that your area could benefit from a community garden or learning new skills then please give Action 21 a ring and we may be able to help.

Wormeries for All? - One way of reducing the amount of kitchen waste is to feed the worms and make liquid and solid compost for the garden. WDC's Environmental Health Department have invested in a wormery, so that all employees can dispose of their apple cores and banana skins in a more useful way. The worms break down the waste into a nutrient-rich liquid and compost which they can then take home and put on their gardens.

Crocodiles in Leamington???



Have you ever seen a crocodile in Leamington Spa? Well, keep your eyes peeled because there may be one coming to your area soon. Action 21 are working with a small number of schools in the area to get more children walking to school, thus reducing cars on the road, pollution and encouraging exercise. The idea of a walking bus has been used in other places across the world, a number of designated "bus-stops" are established along a safe, prearranged route where children will wait to be collected. When the bus arrives, the children hop on board and their parent can go home.

For this idea to work we need YOU! All it requires is a little co-ordination and some keen parents to volunteer. Depending on the number of volunteers, it could mean that you only have to do the school run once a week, not five times.

If, you are interested and live in Bishop's Tachbrook or Whitnash or live in an area where you think this could be of benefit then please give us a ring on 01926 883258.



INTERESTING FACTS

Think Healthy, Think Money - Did you know that the average teenager eats 4 packets of crisps (£1.20), 6 cans of fizzy drink (£3.00), 3 bags of chips (£2.40), 7 chocolate bars (£2.10) and 7 puddings (£5.60) in a week, and only one seventh the recommended intake of fruit and vegetables. Just think how much you would save if they didn't eat any of this processed food £14.30, that's a staggering £743.60 a year!

AGENDA 21

It has come to Action 21's attention that few people are familiar with the aims of Local Agenda 21, and locally, with the name Action 21. When I read the newspaper, the words leap out from the page, but clearly not for most people. Yet, increasingly topics such as global warming, the need for reduced car use, the problems of social exclusion and poverty are becoming topics of conversation for people from all sections of the community.

Awareness has been raised, but locally people do not see how they can, or why they should, take part. It does not seem relevant to their pressing need to get on with daily life.

Yet if you look around, the District is teeming with clubs, societies and interest groups - people joining together to take part in activities which improve their quality of life. People are not apathetic. Moreover, a number of ongoing activities and projects clearly fit in with the ideals of Action 21. Allotment associations supporting people growing their own food and lunch clubs for the elderly helping to reduce social isolation, are just two examples. Ask their organisers if they feel part of the District's Local Agenda 21 programme, and you would get a bemused look. So our problem is one of lack of understanding rather than lack of interest from the community.



Composting is the way to go to reduce waste production

A Massage a Day Keeps the Doctor Away

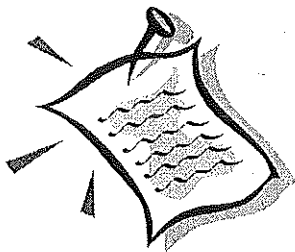
At an Integrated Healthcare Scheme in Glastonbury 85% of patients who were referred for complementary health therapies instead of being given a prescription experienced an improvement in health, being most effective for patients with the severest symptoms, especially those with pain or psycho-social distress. Treatment such as osteopathy, acupuncture, herbalism, massage or homeopathy were used in conjunction with conventional treatments, and showed that the NHS could save money if this technique was more widely spread. If you would like to sample one of these therapies then contact the LETS scheme in Leamington Spa who have therapists on their books. The person to contact for more information on LETS is Ges Goldingay 774873.



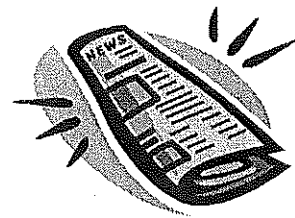
The Chain, Lillington, a community advice and information point.

- Agenda 21 looks at the following issues.
- Social and economic well-being for ALL
 - Efficient use of resources
 - Preservation and conservation of the environment

One idea that we are working on is to have a small budget for grants for community-based projects, for which we will invite applications, and then give publicity to successful projects, 'kite-marking' them as Action 21, to broaden the understanding of sustainable development and promote greater interest.



NOTICES



GP REFERRAL SCHEME

You can now ask your doctor for a referral to the sports centres across the District if it is felt it will help prevent illness. For example, if you have a heart condition, exercise could help prevent a serious episode.

Please ask your Doctor for more information or contact Health Promotion on Tel. 452021

OLD TOWN'S FRESH FOOD FEAST

The Action 21 Food Group is holding an event to promote healthy eating at **Bath Place Community Venture on Saturday 16th September 2000**. Please come along and get involved, there is lots going on including food demonstrations, competitions and information.

CVS CAR SCHEME

For the more senior members of our society there is a door-to-door car lift scheme in operation which will arrange lifts to hospital or doctor appointments. There is a cost involved but ease and the safeguard of getting there safely is guaranteed. For more information please contact CVS on 881151

COMMUNITY FAMILY FESTIVAL

This is your chance to sign up for that course that you've always wanted to do. Come along to any of the days and you will be entertained, given a chance to win prizes and be able to sign up for taster courses in a number of different subjects.

Mon. 4th Sept. North Leamington School and Lillington Library

Tues. 5th Sept. Aylesford High School and The Gap

Weds. 6th Sept. Campion High School and Sydenham Primary School

Thurs. 7th Sept. Kenilworth Library and Kenilworth Connection

Warwickshire College in association with CIT

LEAMINGTON & WARWICK MUSIC CENTRE



Weekly music activities for children, young people and adults. Tuition and the chance to play in groups are available for all. If you want to get involved then please ring the music centre for the new prospectus on 01926 886271

NEW AND INTERESTING WEB-SITES

www.tectonicglobal.com supplies recycled and environmentally sustainable products direct

www.ethicalservices.co.uk up-to-date information and news on the ethical investment sector

WIN FREE TICKETS TO THE ROYAL SPA CINEMA

The A - Z of Sustainability - We would like to find out about what sustainability and sustainable development means to you.

We challenge you to write an A - Z of sustainability, for example ... E is for Employment, F is for Food, G is for Growth and H is for Health.....

There will be two winning prizes, both a pair of tickets for free entry, for any showing at the Royal Spa Cinema, Leamington Spa.

Please send your winning entry to A21, Transaction Competition, The Portakabin, Spencer Yard, Leamington Spa, CV31 3SY. Closing Date Friday 1st September 2000. **GOOD LUCK**

Judges decision is final.

Members of A21 Management committee are not allowed to enter.

