



Manager's message

This summer is going to be an exciting time for Action 21. We've now got a site right in the heart of Leamington where we can meet all of you, our local community. It's a place where you can come and learn all about local sustainability, about what's happening right now, and how you can join in. Over the coming months you'll see it develop into, hopefully, a vibrant visitor centre spearheading the way for local community sustainability.

New Office

The beginning of May was a historic time for Action 21. For the first time ever, we moved into our own offices. Now our headquarters are at East Lodge in Jephson Gardens, and we have our own space. There's enough room for lots of office volunteers to help us with the day-to-day admin activities. We've got space for meetings and even a room for hot-desking. We've also got a beautiful view across the River Leam from our kitchen! We'll be able to run great projects from this base, like the Sustainability Centre and a really exciting garden. Watch this space!

Powering our new office

At the moment, our new office uses energy sourced from Good Energy (if you switch to one of the Green Energy suppliers, either Good Energy or Ecotricity, and quote 'Action 21' we get a referral bonus, so please do!). However, we reckon we could go one step further. How do you think we could make our offices greener?

- 1) Stick with having a green supplier – that's enough
- 2) Install solar thermal technology to heat our water
- 3) Install photovoltaics to generate electricity
- 4) Your own suggestion...

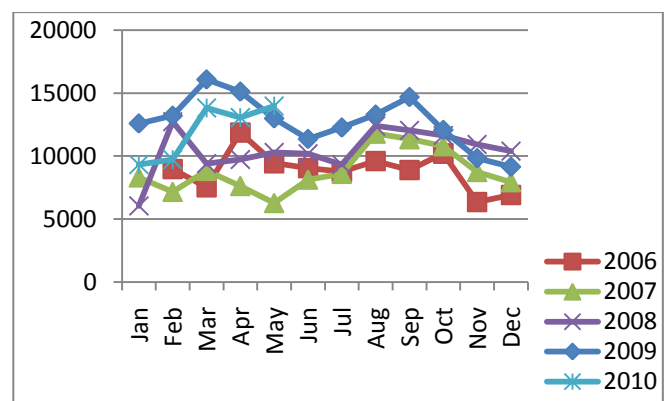
Email Eleanor@action21.co.uk with your vote

Free plants!

From: WDC
Sent: 30 April 2010 17:40
Subject: free plants

Dear all,
We are going to be removing the spring bedding displays at the end of May. We will be delivering plants to the car park at Newbold Comyn in front of the pub. The plants will all be reusable and will include polyanthus (primulas), bellis (daisies) and tulip and hyacinth bulbs. Please come and help yourself. Plants will be delivered on a random basis from Tuesday the 1st of June for 3 weeks. If you are in the parks and see the spring bedding plants being removed, please ask the Glendale staff and you can help yourself. Please be aware that the crews will be very busy so please don't delay them too long.

What we've diverted from landfill in the last few years (in kgs)



Sustainability: What does it mean to you?

We asked volunteer Robyn Dorling to write a blog on "What does Sustainability mean to you?" And this is what she says:

As oil spills into the Gulf of Mexico The World Ocean Council are holding a conference (in Belfast) to bring together industries with concerns in marine environment sustainability.

Being responsible for one of the worst man made environmental disasters in history, is hardly the kind of carbon footprint that any company would want to carry. BP's ruptured well lies 1,600 metres below the surface, and plugging it is proving difficult.

Carrying the can for the environmental footprint of a large petroleum organisation is way beyond the thinking that most of us will ever engage in. But if sustainability runs through every area of your life it will inevitably affect the smallest, and the biggest, decisions that you make. Rather than being a private matter, it is something that travels with us to work, on holiday and into our social lives. When it comes to sustainability the personal really is political.

Cross cultural, economic, geographical and social differences effect the way we live our lives. Worrying about how to offset my air miles is irrelevant to my life but may be a major cause of concern for others. The poorer you are the less you consume the world's resources. This begs the question; if you don't enjoy the luxury of travelling by plane do you have the same responsibility, as the frequent flyer, for sorting out your rubbish?

Is it possible, or even desirable, to share a vision of sustainability in a world of inequality? If sustainable living meant equal responsibility, and equal benefit, it would be easy to see why those who consume the least felt less inclined to concern themselves with environmental issues.

Luckily it doesn't. Sustainability is about raising the quality of life for everybody in a community. When you take on environmental responsibility social responsibility comes with it. I live in hope that if the

wealthiest countries live in a sustainable way, the poorest countries will benefit the most.

Sustainability around the world

Community Bicycles Southern Africa: Community Bicycles Southern Africa is a Section 21 Company (not for profit) that is established to encourage cycling in Southern Africa. Our mission is learning, riding and doing. We focus is on communities and our building blocks are families, schools and local authorities. Our vision is a bike friendly society accessible to all. <http://www.communitybikes.co.za/>

Philippine Community Fund: The PCF takes Glossy magazines and leaflets, ring pull tabs from canned drinks, Recycled juice packs, printed tarpaulin that is recovered from the cities billboards, Used toothpaste tubes, crisp packets and truck tyres and turns them into accessories, jewellery and bags. The proceeds of these products are reinvested into livelihood projects. http://p-c-f.org/what_we_do/income_generation.php

Happy Customers

Some good news from the Re-Use shops:

: customer praise
nt:7 April 2010 14:18

Hi everyone,

Rick just picked up the phone at the Re-Useful Centre to receive a lovely phone call from a customer (he's busy moving the office so asked me to email).

The customer had one of the last collections yesterday and wanted to ring to thank Stuart and Martin in the van as she thought they worked extremely hard, were really polite and were a credit to the company! She was also impressed by the environmental work of Action 21 in general!

Cheers

Valpak at the Sustainability Centre



All throughout June, groups of volunteers from Valpak (you might be familiar with their *Recycle More* website) will be helping us to transform the garden at East Lodge in Jephson Gardens. They'll be donating almost £2000 and around 500 hours of labour to do lots of hard-landscaping, mulching, weeding, habitat-making and even a little bit of planting.

Over the past few months we've had companies helping us with a range of our projects. They've come from:

- Jaguar Landrover
- Conoco Phillips
- IBM
- KES Builders
- Carillion PLC
- Barclays Bank

Adopt a bee

Your bees....your town...

About 1000 bees have come to Action 21's Sustainability Centre to live in our very own observation hive. As part of our holistic attitude towards sustainability, we realise that biodiversity is really important and honey bees are an integral part of this. Our bees will help to encourage other local flora and fauna: they'll be pollinating local flowers and fruit trees, buzzing merrily around the gardens. We've trained up our own bee keeper (otherwise known as Amy, Volunteer Programme Manager) and we'll be working alongside Warwickshire Beekeepers' Association to give the bees the very best care.

But these bees aren't just our bees. Oh no. They can be your bees too. We're giving these bees up for adoption (so to speak) because we want you to share the joy of having bees in your town's gardens.

Bees are great. Did you know that they pollinate around 40% of the food we eat? Or that they can carry up to half their body-weight in pollen?

For £2 a month (by direct debit), or £25 a year (by cheque or transfer), you can adopt one of our beautiful, fuzzy, friendly bees. You can come and see your bee whenever the Sustainability Centre is open (we can't promise he'll be in). You can name your bee and watch it on the webcam (under construction), and we'll give you a photo of your bee to stick on your wall. We'll send you a monthly update on the hive's progress. Once a year we'll arrange a 'Meet the Beekeeper' session so you can learn all about your bee's life. We'll even have a bee guarantee, so if you prove to us that your bee has passed on, we'll allocate a new bee to you.



To adopt a bee email Eleanor@action21.co.uk

How about growing some of your own bee-friendly plants? Here's a list of some tried-and-tested bee-friendly plants from www.thedailygreen.com:

Annuals Clover Marigolds Poppies Sunflowers Garden Plants Blackberries Cucumbers	Peppers Pumpkins Raspberries Strawberries Wild Garlic Perennials Buttercups Clematis	Cosmos English Ivy Foxglove Geraniums Globe Thistle Hollyhocks Hyacinth Roses	Tansy Yellow Hyssop Herbs Borage Catnip Coriander Fennel Lavender	Mints Rosemary Sage Thyme Shrubs Blueberry Butterfly Bush Honeysuckle Privet
---	--	--	---	---

Summer events

Sustainability Education for 1500 children

From 9th to 11th June this year, Action 21 and project partners Warwickshire County Council, Rugby Borough Council, North Warwickshire Borough Council and Coventry City Council held our annual schools sustainability education event, '2010 and Beyond'. Over three days, around 1500 children took part in fun workshops to learn about sustainability, biodiversity, fair-trade and the 3 Rs.



Fab Fabs swap shop

On Saturday 12th June from 2pm to 4pm, Action 21's Fab Fabs volunteers hosted a Charity Swap Shop at the Sydni Centre. Last week I learnt that: old, painty, unwearable jeans PLUS big scissors EQUALS new funky shorts. To find out more about Fab Fabs pop along to the Sydni Centre 11am-3pm on a Thursday.



Festival Recycling

Last year, our volunteers diverted over 1.5 tonnes of recyclables from landfill at the Peace Festival alone. This year, we're helping out at the Peace Festival (19th – 20th June) and Warwick Folk Festival (23rd – 25th July). Can you help us do even better this year? Contact Volunteer Programme Manager Amy Footer (amy@action21.co.uk or 01926 453030).

Opening of the Sustainability Centre and garden

The date is yet to be confirmed, but some time this summer the Sustainability Centre and garden will be opening to the public. Keep an eye out for special members' events

A thought

A thought from the ECO workshop at Dale Street Church:

It's not just 5 Rs (Refuse, Reduce, Re-use, Repair, Recycle). There's another – REJOICE!

The ECO (Engaging Community Organisations) Project is the brainchild of Action 21 Green Champion Ian Davison and his group of Green Champions. They are able to go out to different community groups – faith groups, sports groups and more – to help them unleash their green potential! Go to www.action21.co.uk/ECO for more information.

Fun and games

Word search – How many words can you find? They're all somewhere in this newsletter too...

v	o	l	u	n	t	e	e	r
a	x	s	w	a	p	n	c	e
l	f	a	b	y	z	g	o	p
p	l	a	n	t	a	a	o	a
a	m	u	l	c	h	g	f	i
K	b	t	r	a	d	e	f	r
f	a	i	r	c	g	h	i	j
m	v	n	r	o	s	e	c	b
y	o	d	l	o	b	w	e	n
c	h	i	l	d	r	e	n	q

Volunteer, Valpak, plant, fair, trade, children, engage, repair, office, ivy, swap, fab, eco, bee, mulch, rose, Newbold

